



California's Master Plan for Learning and Care

Update to First 5 California June 2020



“We will create a Master Plan for Early Learning and Care that will be rooted in lifting up California’s children and families today, tomorrow and into the future.”

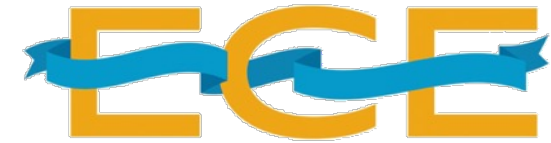
-Governor Gavin Newsom



Moving Recommendations into Reality

Family Needs
+
Strong Evidence
+
Recent Recommendations
=
Master Plan

GA ASSEMBLY BLUE RIBBON COMMISSION



ON EARLY CHILDHOOD EDUCATION



California Preschool Development
Grant Birth Through Five



*Harmonizing Public, Private, and
Community Resources to Deliver on a
Commitment to a California for All Kids*

Vision

Young children thrive physically, emotionally, and educationally in their early years with equitable access to child and family-centered services that support healthy child development.



Values

- **Advance equity**
Address inequities associated with race, ethnicity, and language and attend to the needs of our most vulnerable including foster children and homeless
- **Respect parental agency**
Engage families as partners, recognize that they are the greatest providers of skills and dispositions in their children, and empower them as the drivers of success
- **Respect childcare and early learning professionals**
Redesigning programs and supports to increase pathways to professional careers at professional compensation
- **Know each child and each family**
Address whole child and family needs, including trauma informed care to lessen their burdens, increase their opportunities and improve their outcomes

California's Early Childhood Racial Equity Problem

- Nearly one-quarter of children under age 5 live in a family struggling to afford the basics
- Race and ethnic disparities in child poverty reflect impact of systemic racism and other forms of discrimination

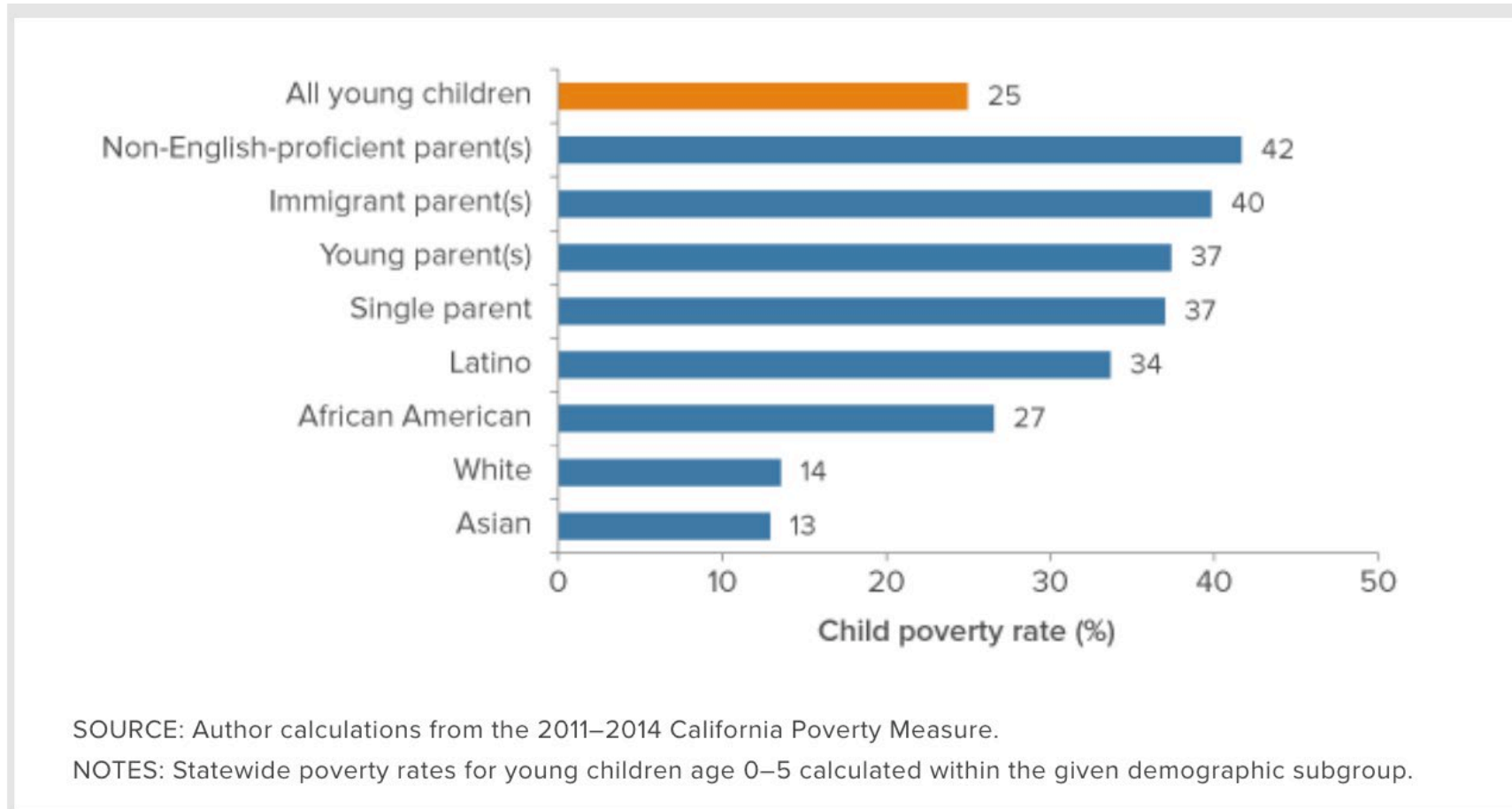
Source: California Budget Project, California's Persistently High Child Poverty Rate Is Even Higher for Children of Color (2018)



California's Early Childhood Racial Equity Problem

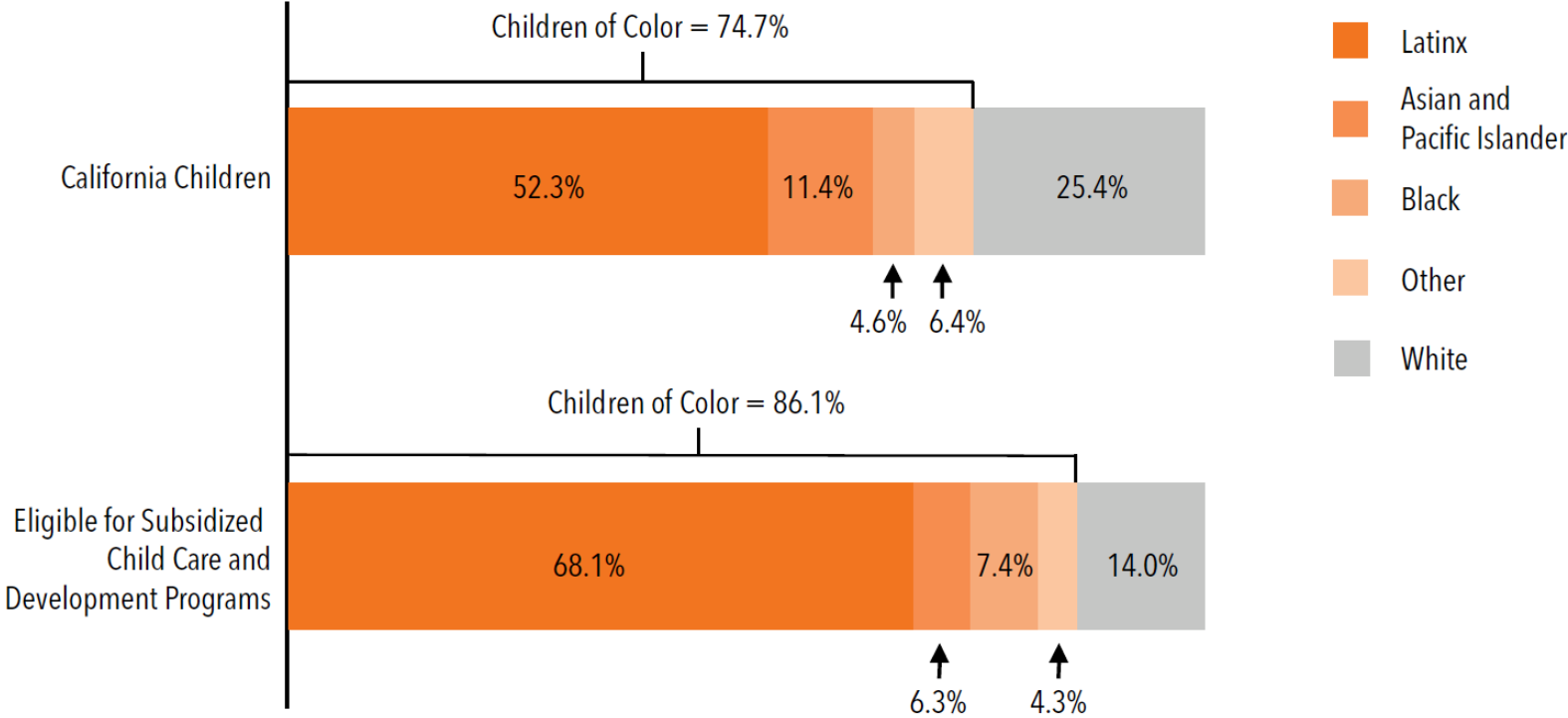
- People who were persistently poor as children face future challenges
 - Just 64% of people who were *persistently* poor as children — spending at least half of their childhoods in poverty — attained a high school diploma by age 20, compared to 83% of people who experienced poverty for shorter periods and 93% of people who never lived in poverty as children.
 - Just 3% of people who were persistently poor as kids completed college by age 25, compared to 16% of people who lived in poverty for less time and 37% of people who never experienced poverty during childhood.
 - Only 35% of people who were persistently poor before age 18 were consistently employed between ages 25 and 30, compared to 64% of people who experienced shorter spells of poverty and 70% of people who never fell into poverty as kids.
 - Nearly half (45%) of people who lived in poverty for at least half their childhoods were living in poverty at age 35, compared to 8% of people who lived in poverty for less time and just 0.6% of people who never endured poverty as a child.

Young children in some demographic groups are much more likely to be poor



Overall children of color are disproportionately eligible for subsidized care

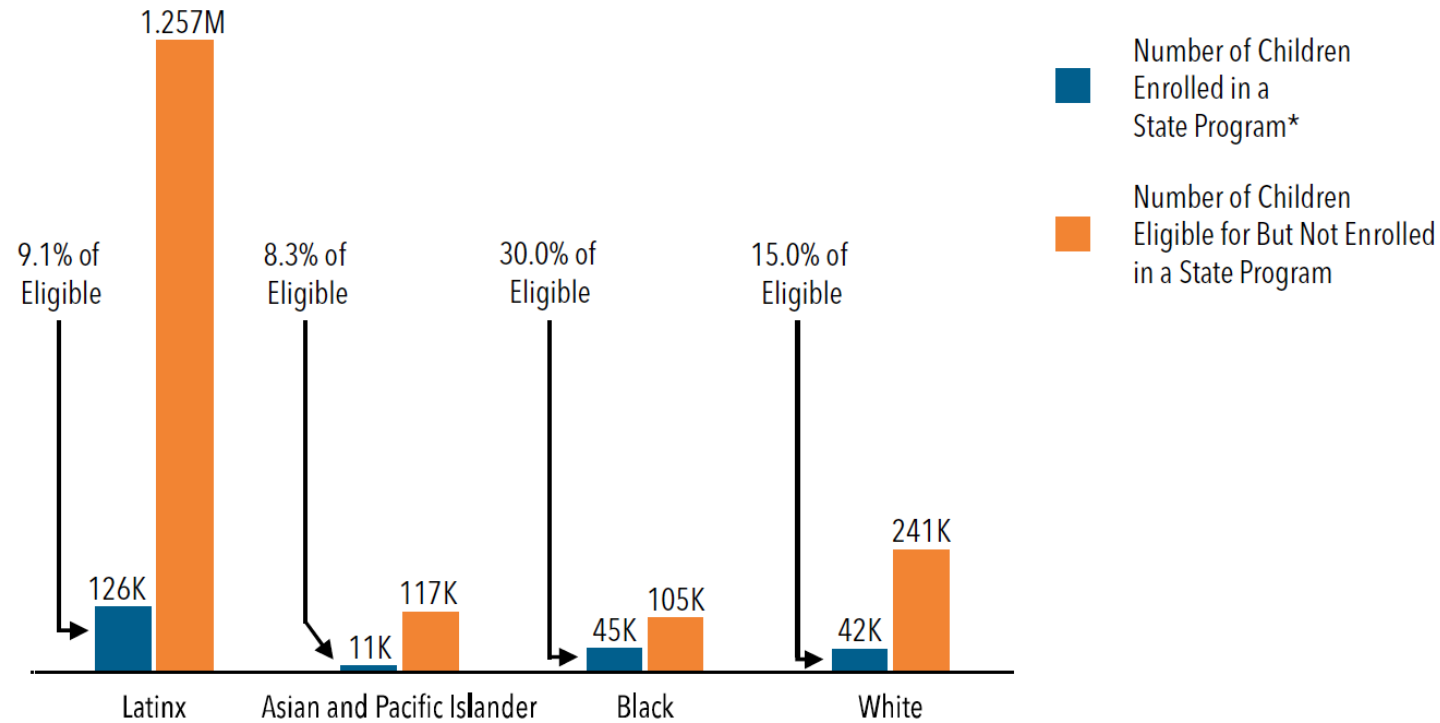
Race and ethnicity of California children, birth to age 12 (2017)



Note: Figures may not sum to 100 due to rounding. Race and ethnicity categories are mutually exclusive. The "Other" category includes Native American, multiracial, and unspecified races. Source: Budget Center analysis of US Census Bureau, 2017 American Community Survey data

Enrollment in subsidized childcare and state preschool varies by race and ethnicity

Estimated number of California children eligible for subsidized care = 2 million



* Enrollment is for children from birth through age 12 in October 2017, except for California Community College CalWORKs Stage 2 data, which reflects a Department of Finance estimate for the 2017-18 fiscal year. Includes children enrolled in full-day California State Preschool Program (CSPP). Excludes children enrolled in the part-day CSPP or the Handicapped Child Care Program. The race and ethnicity figures are estimated for CalWORKs Stage 1 and California Community Colleges CalWORKs Stage 2.

Note: Race and ethnicity categories are mutually exclusive. Native American, multiracial, and unspecified race categories not shown here.

Source: Budget Center analysis of data from the California Department of Education, Department of Finance, Department of Social Services, and US Census Bureau, 2017 American Community Survey data



California Budget
& Policy Center

Addressing Racial Equity in the Master Plan

- **Provide high-quality care and support to all children living at high risk for persistent poverty**
 - Restructure programs to provide our lowest income families (those eligible for CalWORKS and TANF) with priority and support to access the state's highest quality childcare options
 - Address regulatory barriers to accessing care
 - Create incentives for QRIS rated 4 and 5 programs to offer non-traditional hours
 - Fund based on enrollment rather than attendance to accommodate irregular schedules
 - Expand full-day care options &/or incentivize part-day care options coordinate extended hour care
- **Eliminate negative impacts of implicit bias**
 - Train providers on implicit bias, cultural sensitivity
 - Review data on enrollment, attendance, refer to special education, suspension, and expulsion by race and ethnicity
 - Require reporting of suspensions and expulsions by gender, race, and ethnicity

Addressing Racial Equity in the Master Plan

- **Prepare all childcare professionals to meet the diverse and critical needs of young children**
 - Require competency and training in dual language learners and trauma informed practice
- **Address racial disparities in compensation and career advancement**
 - Rebuild rate structure to support horizontal equity (comparable providers received similar pay) and vertical equity (rationalized expectations of a progressive differences based on program and/provider characteristics)
 - Make available professional learning supports that contribute to advancement in competency and compensation

Whole Child, Whole Family

Children Deserve

- Health and wellness
- Positive and supportive relationships with family and other caregivers
- Nutrition
- Early identification and intervention for areas of need



Whole Child, Whole Family

Families Deserve

- Comprehensive support including health and wellness
- Options for care
- Affordability
- Information
- Simplicity

Providers Deserve

- Professional learning and support
- Career development
- Compensation
- Simplicity



Goals


California's early childhood system delivers on the promise of a *California for All Kids* by providing all families...

- **Access to Quality Care and Support**
- **Affordable Quality Care and Support**
- **Comprehensive and Coordinated Health and Wellness Support**






Access to Quality Care and Support


- **Promote positive adult-child interactions**
 - **Parent-centered design**
 - **Build-up and sustain early childhood workforce**
- 

Affordable Quality Care and Support

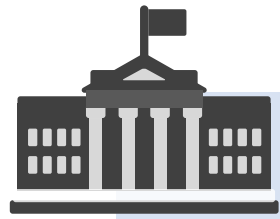
- **Leverage public-private partnerships**
 - **Create a funding structure to guide long-term investment in a mixed-delivery system**
 - **Align program standards to a common definition of quality**
- 



Comprehensive
and
Coordinated
Health &
Wellness
Support

- **Welcome and connect with families**
 - **Streamline services to families**
 - **Coordinate planning and management of whole child, whole family support**
 - **Integrate health and care data**
- 

Current California Early Childhood Spending



\$10.4 Billion

State

Federal

Local

+



Parent



Time to Change How We Fund Early Childhood Support



EFFICIENCIES



ALIGNMENT
TO VISION



NEW REVENUE
SOURCES



SIMPLIFY

Investments & the Master Plan for Early Learning and Care

- **Catalyst**
 - Getting good ideas started
- **Connector & Collaborator**
 - Bridging to support whole child
 - Public-private partnerships
- **Coordinator**
 - Leveraging statewide reach through local First 5s



Discussion

