

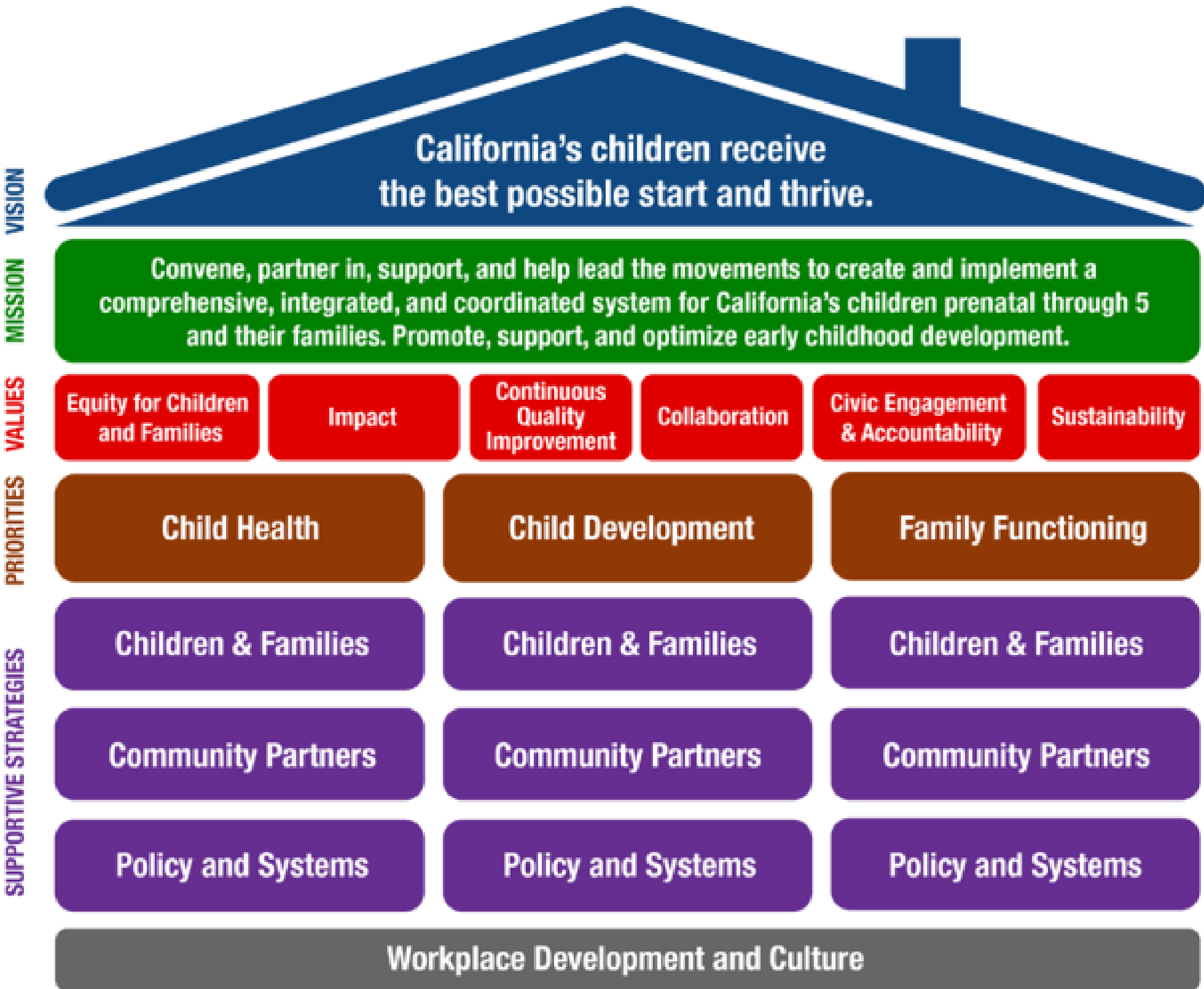
# First 5 California State Commission Retreat

April 1, 2021



# First 5 Strategic Plan

## What's Under Way and Why





# **What does First 5 California care about and why?**



## **Early Learning**

- 1. IMPACT 2020 - \$103 million over 3 years**
- 2. California Family Book Distribution Partnership - \$1.5 million over 6 months**
- 3. Emergency Supplies Program - \$2 million over 6 months**



# Research & Evaluation

- 1. California Health Interview Survey (CHIS) - \$1.7 million over 2 years, funder since 2001**
- 2. Kit for New Parents Evaluation - \$1 million over 2 years**
- 3. Emergency Child Care Foster Bridge Evaluation - \$150,000 over 2 years**
- 4. Essentials for Childhood (CDPH/CDSS leads) child maltreatment prevention including ACES**





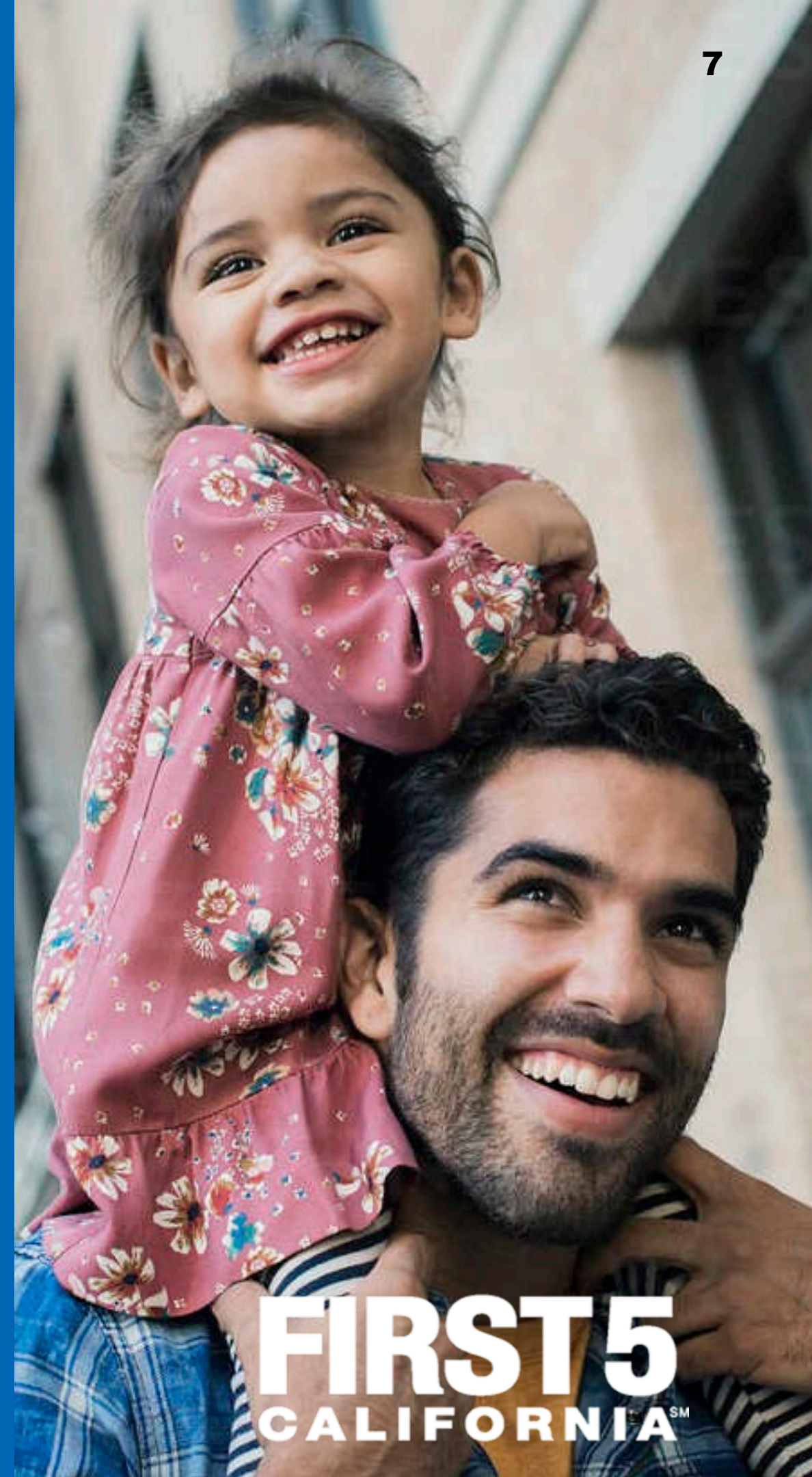
**FIRST 5**  
**CALIFORNIA**<sup>SM</sup>

## **External and Governmental Affairs**

- 1. State Advocacy - \$775,000 over 3 years**
- 2. Paid Family Leave Advocacy - \$100,000 over 2 years**
- 3. Federal Advocacy - \$450,000 over 3 years**
- 4. Media Campaign - \$67 million over 3 years**
- 5. Kit for New Parents - \$20 million over 3 years**

# Continuous Quality Improvement

- 1. Dual Language Learner Pilot – \$20 million over 5 years**
- 2. Home Visiting Workforce Study – \$2 million over 2 years**
- 3. Home Visiting Coordination – \$24 million over 5 years**
- 4. Small Population County Funding Augmentation (SPFCA) – \$20 million over 4.25 years**
- 5. Smokers Helpline – \$3.6 million over 3 years**



# Administration and Workforce Support

**Five percent of First 5 California's revenue funds administrative supports to operate the agency. This includes, but is not limited to:**

- 1. Agreements with state agencies for services such as human resources and accounting**
- 2. Rent and utilities**
- 3. Pro rata**
- 4. In-house information technology, administrative, fiscal, and contract services**
- 5. Commission meeting preparation**
- 6. Annual Report production**



# What We Will Accomplish Through FY 2021-22

- **Use Data Digest to provide common language and metrics to inform progress in meeting the goals and priorities of the Strategic Plan.**
- **Institutionalize use of Communities of Practices as a method of expanding and sustaining effective practices for Dual Language Learners.**
- **Understand how shared services can support efficient administration of programs and services.**
- **Implement a new media campaign that focuses on awareness and prevention of Adverse Childhood Experiences (ACES).**
- **Have clear policy recommendations for improved state infrastructure to support expansion of home visiting within systems of support for children and families.**
- **Increase staff awareness of equity, and ability to collect and use data to address equity issues.**

# Future Considerations

- **Address COVID-19 recovery through program investments and/or research (e.g., children and families, early childhood education, and/or school readiness, etc.).**
- **Develop common understanding of school readiness from an equity lens.**
- **Assist with research and evaluation related to ACES data.**
- **Increase awareness, training, and capacity-building at the state and local levels related to trauma informed care.**
- **Support for mental health as an integrated component of broader health care services for children and families.**

# Questions?



# Thank you!

